



# Fitzpatrick Engineering Pty Ltd



- Heavy Duty Fabrication
- Specialised Machining
- Precision Welding
- Quality Products
- High Class Service



# BIG OR SMALL, WE DO IT ALL!

Fitzpatrick Engineering is a fabrication & machining company established in 1984.

## 40 YEARS OF ENGINEERING EXPERIENCE

We have completed projects for some of the Major landmarks & companies in our industry including ongoing upgrades on Upper canal for Sydney Catchment Authority, Department of Commerce & Warragamba Pipeline as well as the manufacture of custom-made mining carts for Sandvik & leading mine organizations.

Pinch valves, Staircases, Hand railing, platforms, pressurised tanks, conveyors, man-pods, chutes, duct work, odour scrubbers, water & wastewater treatment, plant upgrades/ renewals & prototype projects for customers, Hoppers, Mine carts, samplers, scrubbers, full duct-work projects including all straights, bends, elbows & transitions of which every item is cut, fabricated, welded, painted & assembled in-house. Pinch Valves, Structural & mechanical installation, Mining Carts, railings, Base plates for Sydney water, Sydney catchment authority, SITA & Boulderstone Hornibrook to name a few; these are all projects we have immeasurable experience in.

## SUPPLYING ALL OVER THE WORLD

**The workshop has 2 areas of operation** - Steel Fabrication & Machining as well as Design & Manufacture of Industrial Fans. Both combined improve the ability to reduce our production cost & allow the manufacturing process to run more smoothly & effectively. Our 24/7 emergency service can be on site to handle urgent situations smoothly & will not leave until the problem is solved & you are satisfied.

### **Reduce the impact on your productivity with our Turnkey Projects!**

FIF can carry out your entire operation. From the Design & Drafting process to the manufacture & surface treatment right thorough to the delivery & installation.

All our welders are qualified to AS 1554.1 & all facets of our activities use AS/NZ ISO 9001 as its quality standard.

### **We are available for breakdown and maintenance service 24 hours per day seven days a week.**

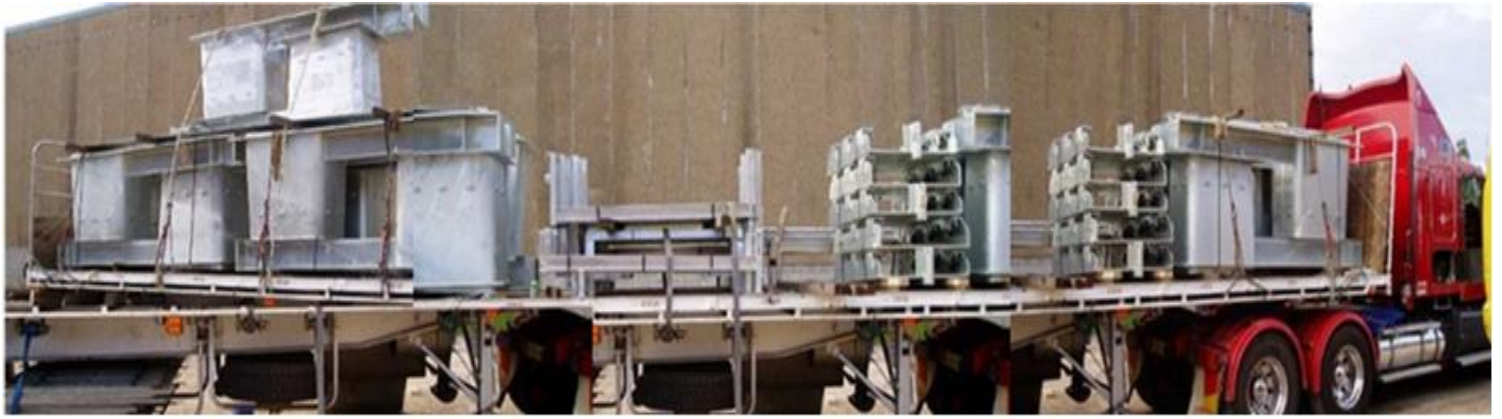
FIF provide fully detailed structural steel drawing on all our projects as well as a full-service record for each product. This not only ensures that long term maintenance requirements are met, it provides an invaluable resource when upgrades or enhancements are needed.

We are 100% Australian owned & operated, located in the Sydney region.

**Please refer to our Website [www.fitzeng.com.au](http://www.fitzeng.com.au) for further information on our products & services.**

Heavy duty Fabrication, Welding, Specialized Machining, Industrial Fans, Louvres, Silencers, Installations, Breakdowns, General Fabrication & Engineering. [www.fitzeng.com.au](http://www.fitzeng.com.au) Ph: (02) 4677 1220





**180 Floor Hoppers for Koorang Island**



**Refurbishment & Repairs done on Truck Trailer**



**T1 Trestle for RIO TINTO Project**



**Steel Work for Anglo American Coal 204 & 109**

Heavy duty Fabrication, Welding, Specialized Machining, Industrial Fans, Louvres, Silencers, Installations, Breakdowns, General Fabrication & Engineering. [www.fitzeng.com.au](http://www.fitzeng.com.au) Ph: (02) 4677 1220



# SOME OF THE PROJECTS COMPLETED FOR CUSTOMERS.



**Odour Scrubbers for North Head Treat-**



**180 Floor hopper “  
For Kooragang Island**

Modification and upgrade to  
dust collector at Unanderra.

Ongoing Maintenance and  
overhaul of equipment at  
Sewage Treatment plants  
Liverpool, Glenfield, War-  
riewood, Hornsby.



Manufacture and supply of Mine  
Cart fabricated compo- nents, eg;  
bolsters ras plates etc. Also  
Manufacture Mine Carts, FBL40,  
FBL15, FBL10, MH40- FBR15  
etc.





**1M DIAMETER PIPING**  
*For*  
***CRONULLA STP- LEND LEASE***



**Manufacture and installation of this project was fully conducted by  
Fitzpatrick Engineering Pty Limited.**



## CHEMICAL DOSING PLANT

### *At LIVERPOOL STP*

This project was ongoing for many months. The project ran very smoothly, and FITZ was given all future upgrade jobs at 4 other plants





# **Warragamba Pipeline No.1**

## ***Anchor Block 121A***

### ***Platform supported by saddle arrangement***



**FITZ carried out all steel works  
associated with the upgrade of  
Warragamba Pipeline Stages 1 and 2.**

***Specialised Machining & Fabrication  
An OHS&R Accredited Company***

Heavy duty Fabrication, Welding, Specialized Machining, Industrial Fans, Louvres, Silencers, Installations, Breakdowns, General Fabrication & Engineering.

[www.fitzeng.com.au](http://www.fitzeng.com.au)

Ph: (02) 4677 1220



# Pinch Valves

## *Jindex Pty Limited*



Our machine shop has been manufacturing and assembling pinch valves of various sizes and many prototypes for well over 15 years now we continue to manufacture these for our long outstanding customer.

Heavy duty Fabrication, Welding, Specialized Machining, Industrial Fans, Louvres, Silencers, Installations, Breakdowns, General Fabrication & Engineering.

[www.fitzeng.com.au](http://www.fitzeng.com.au)

Ph: (02) 4677 1220



# **ODOUR SCRUBBER**

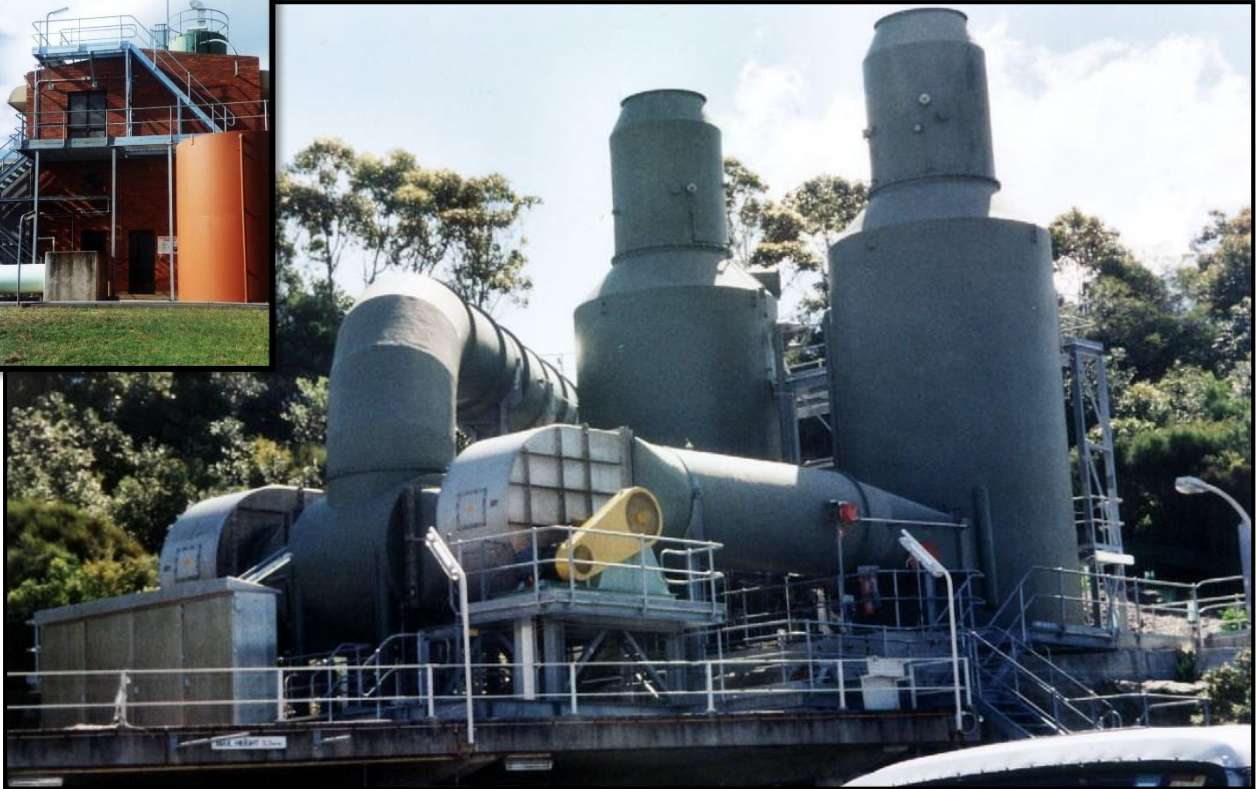
## **Mechanical & Structural Installation**

### ***AT LIVERPOOL STP***



The manufacture and installation of this entire project was by Fitzpatrick Engineering.

**Storage Tunnel  
Scrubber & Mechanical Installation  
*NORTH HEAD TREATMENT PLANT***



**STEELWORK, PLATFORMS, STAIRCASES & RAILINGS  
*At GRIFFITH WTP MANUFACTURED AND INSTALLED BY JMD***



**MODIFICATION & UPGRADE TO DUST COLLECTOR AT UNANDERRA.**



## *Push Plate Bucket- For Gujarat– NRE Mine*



*Specialised Machining & Fabrication  
An OHS&R Accredited Company*

## *Mining Cart*



*All plates were cut at our workshop,  
pressing bending welding and full  
manufacture were carried out by our  
own staff. Painting was carried out  
externally*



## *Lift Arms and Base Plate*



## *Mining Cart ready for transport*



## *Damper Ready for Transport*

# All your Industrial-

## Centrifugal Fans . Blowers . Silencers . Louvres . Dampers . Ventilation & Flow Control Equipment.

Fitzpatrick Industrial Fans designs & manufactures a wide range of centrifugal/ axial flow fans, dampers, silencers, Louvres & related flow control equipment for the industrial, mining & minerals processing in Australia & overseas.

We have in excess of 40 aerodynamic fans designing from small units weighing around 100 kg with a motor power of a few kW, to fans weighing 20 tonnes with a rotating impeller mass of 4,800 kg.

The list continues to accrue as we constantly develop new designs & add further options to existing designs to enhance the performance & versatility of our products.

All products are designed with the utmost detail being calculated for reliability, economical outlay on a long-term basis & environmental impact. Our Sydney factory carries out all design, development & manufacturing as well as testing - including noise/ vibration to ensure we have direct control over the project at all times.

**FIF provide after sales & regular servicing to your equipment to ensure your product is running smoothly 24/7.**

FIF offer high expertise on Installations, retrofits, upgrades, overhauls, servicing, fault analysis, alignment, refurbishments, relocation, spare parts, repairs & breakdowns.

We have been providing ongoing services to high productive companies such as FL Smidth, Bluescope, BHP Billiton, Anglo American, Iloha Resources, QNI, Vale Inco, Cargill, Manildra Group, Pacific Coal and CSR to name a few. Our ongoing commitment to provide high quality products, service and reliability with these companies ensures we continue to provide services for the ongoing upgrades to equipment and manufacture of new equipment as the need arises.

**FIF will leave you feeling 110% satisfied with your completed project providing you with a fan of robust construction, assuring you of a long, reliable service life.**





# **FABRICATION MEETS FANS**

## **MG109 & 204 Damper Installation at Morahbah North Coals**



The example on this page was designed, manufactured, installed and commissioned in only a short matter of time, during the Christmas period. It will be again upgraded with a Fan Impeller attachment in the near future which FIF will be manufacturing as well.



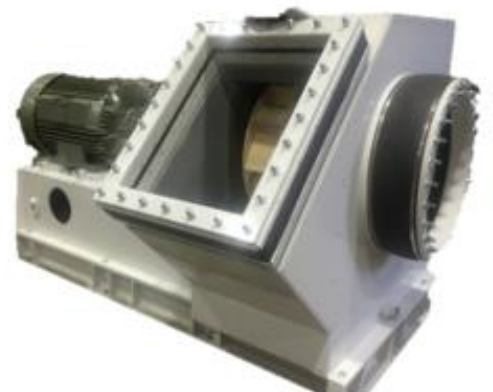


**4 Blade 316 Stainless Steel Rectangular Damper - Before & After**

**EXPERT  
DESIGN.  
TRUSTED  
POWER.**



*Rubberlined Acid Fume Exhaust Fan*





## **FABRICATION MEETS FANS**

*Thank you* for taking the time to peruse  
our extensive range of products &  
services.

For any Enquiries please contact our  
friendly staff on **(02) 4677 1220** who  
would be happy to assist you with your  
next project.

**GREAT  
TOMORROWS ARE  
BUILT TODAY**  
**[www.Fitzeng.com.au](http://www.Fitzeng.com.au)**

**Quality Products at a Competitive Price.**



## **Fitzpatrick Engineering Pty Limited**

Address: Unit 1/3 Nursery Road,  
Campbelltown NSW 2560

Phone: (02) 4677 1220

Email: [John@fitzeng.com.au](mailto:John@fitzeng.com.au)